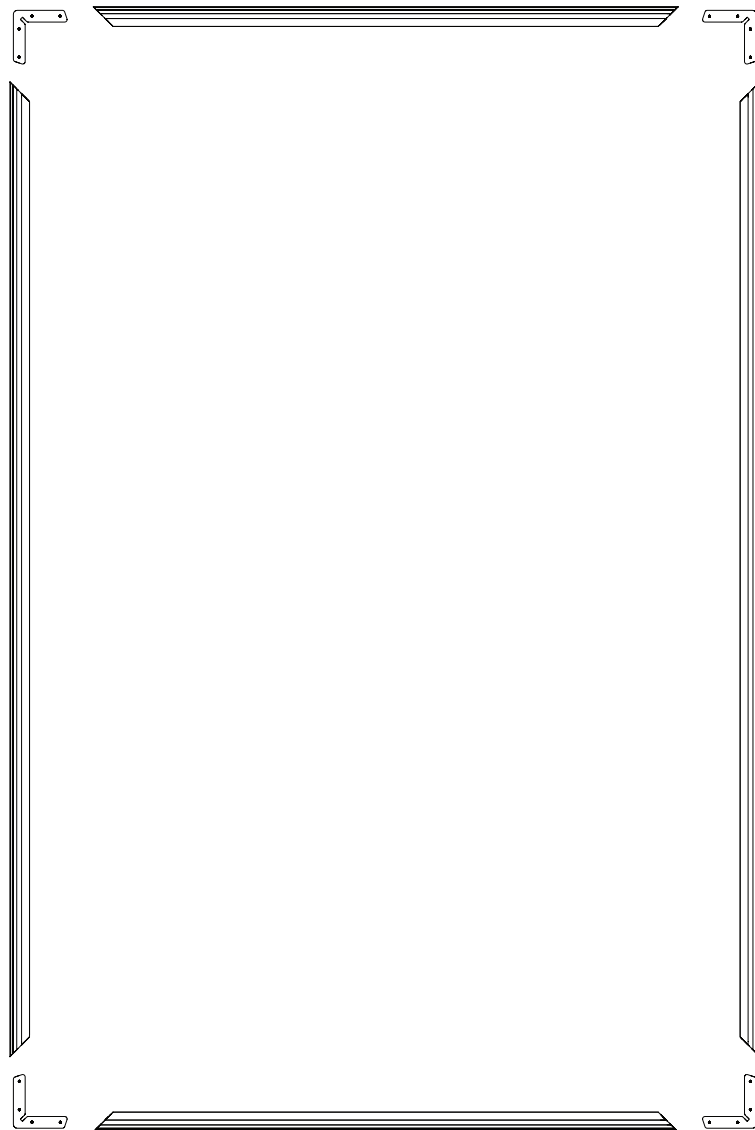
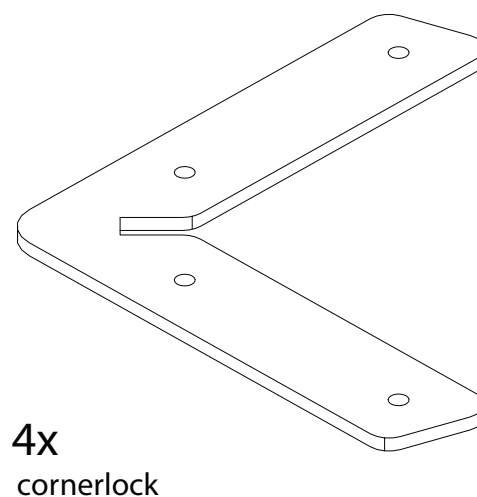
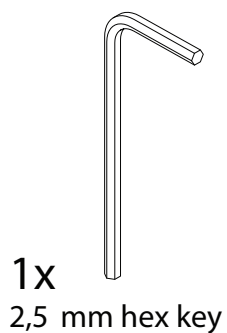
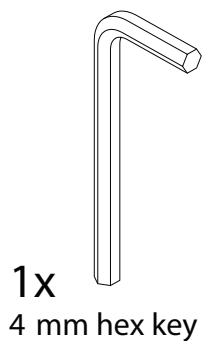


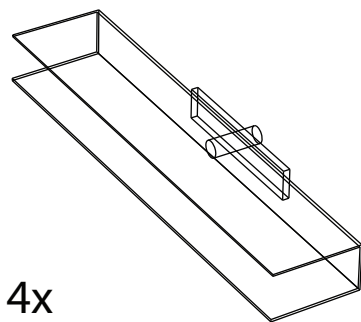
Acoustic Slim 28

Mounting instruction



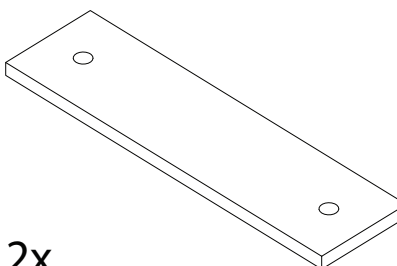


Wall mount components (optional)

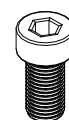


4x
Acoustic foam
plastic holder

Extension components (optional)

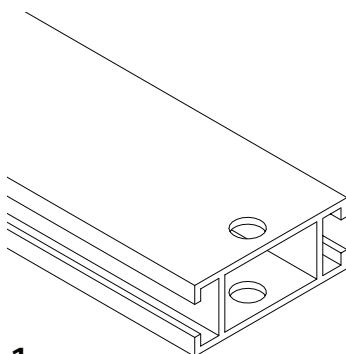


2x
extension plug

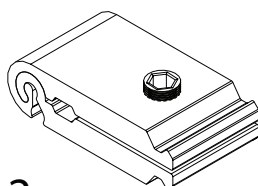


4x
extension plug
screw

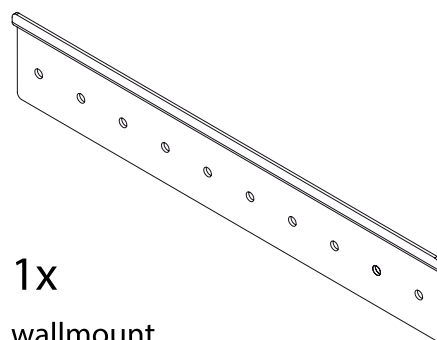
Stabilizer components (optional)



1x
stabilizer profile



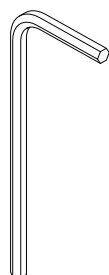
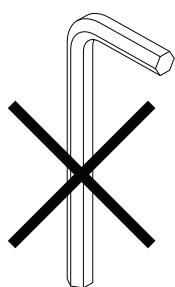
2x
stabilizer lock



1x
wallmount

Caution
Sharp edges !

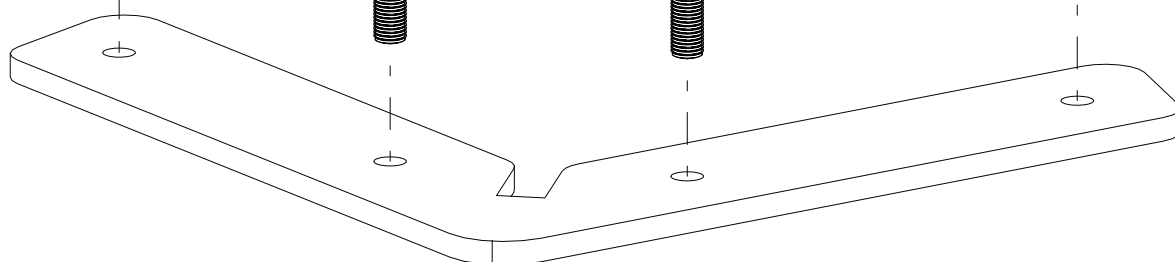
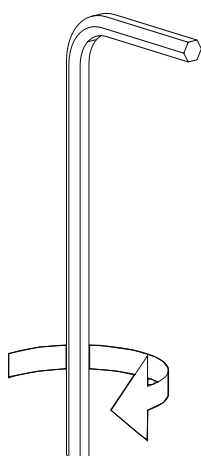
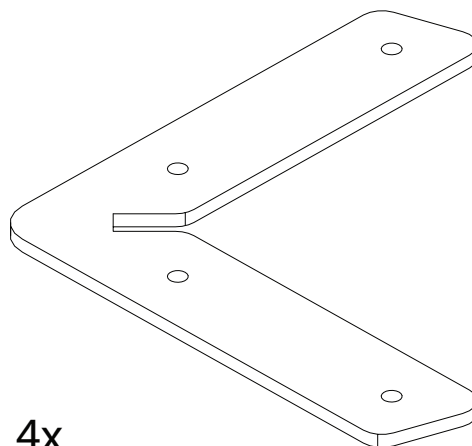
1



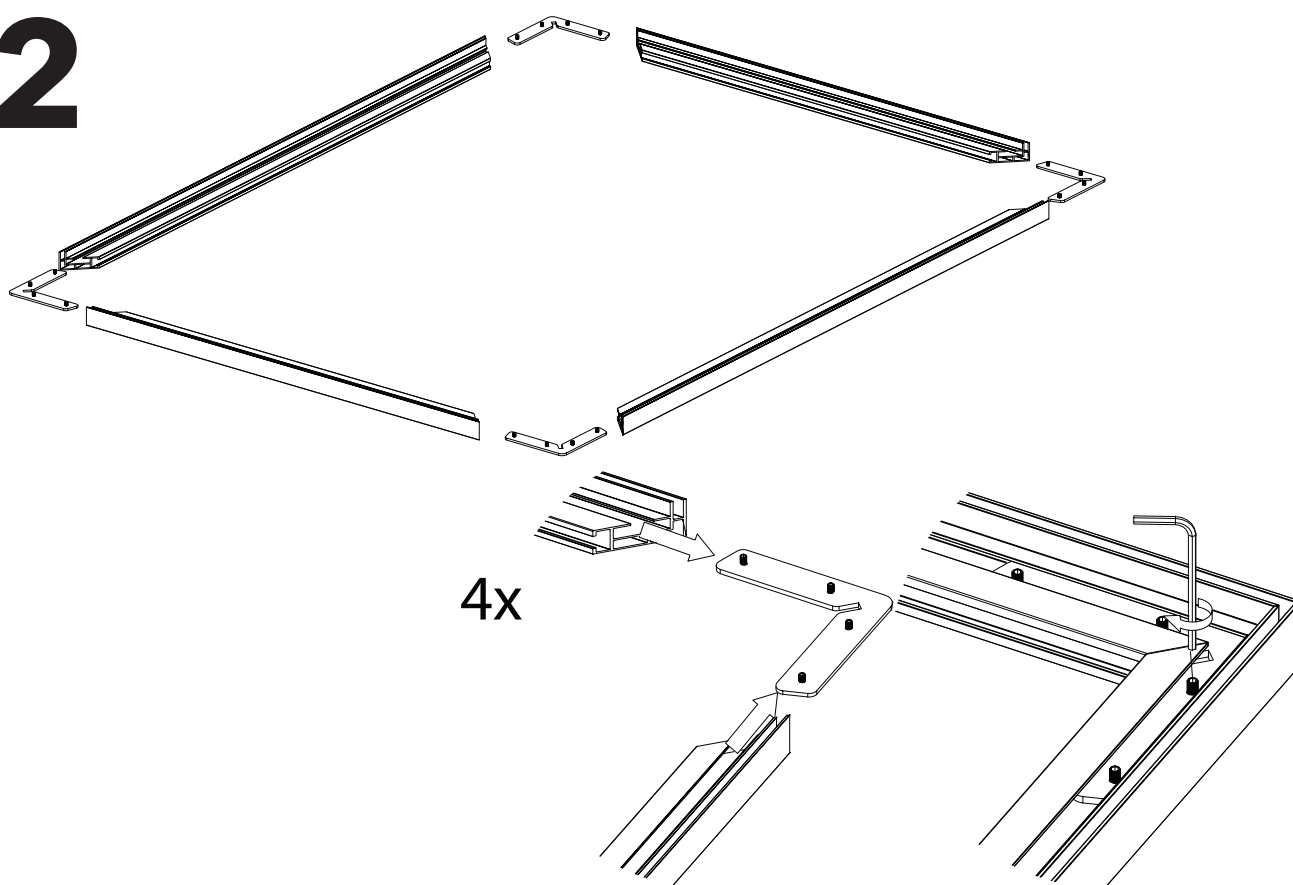
16x



4x

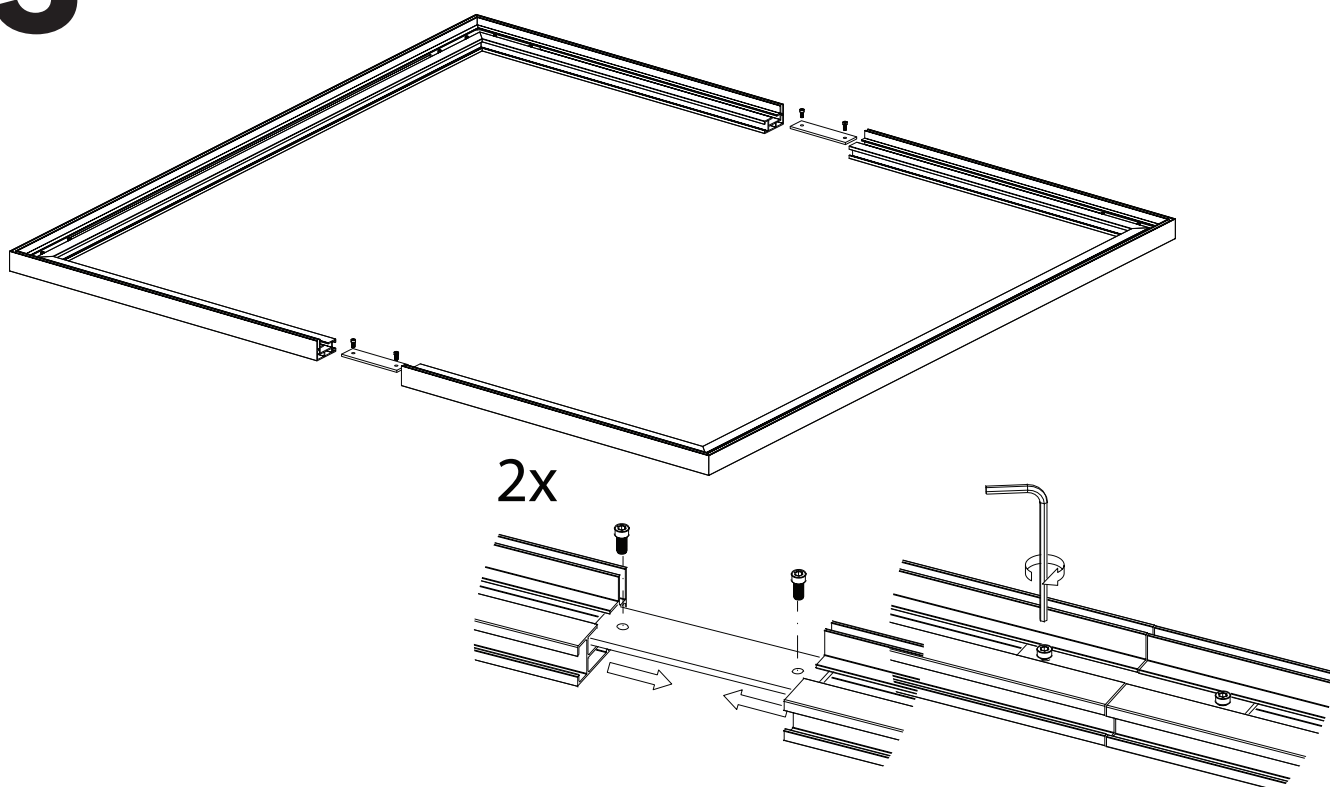


2



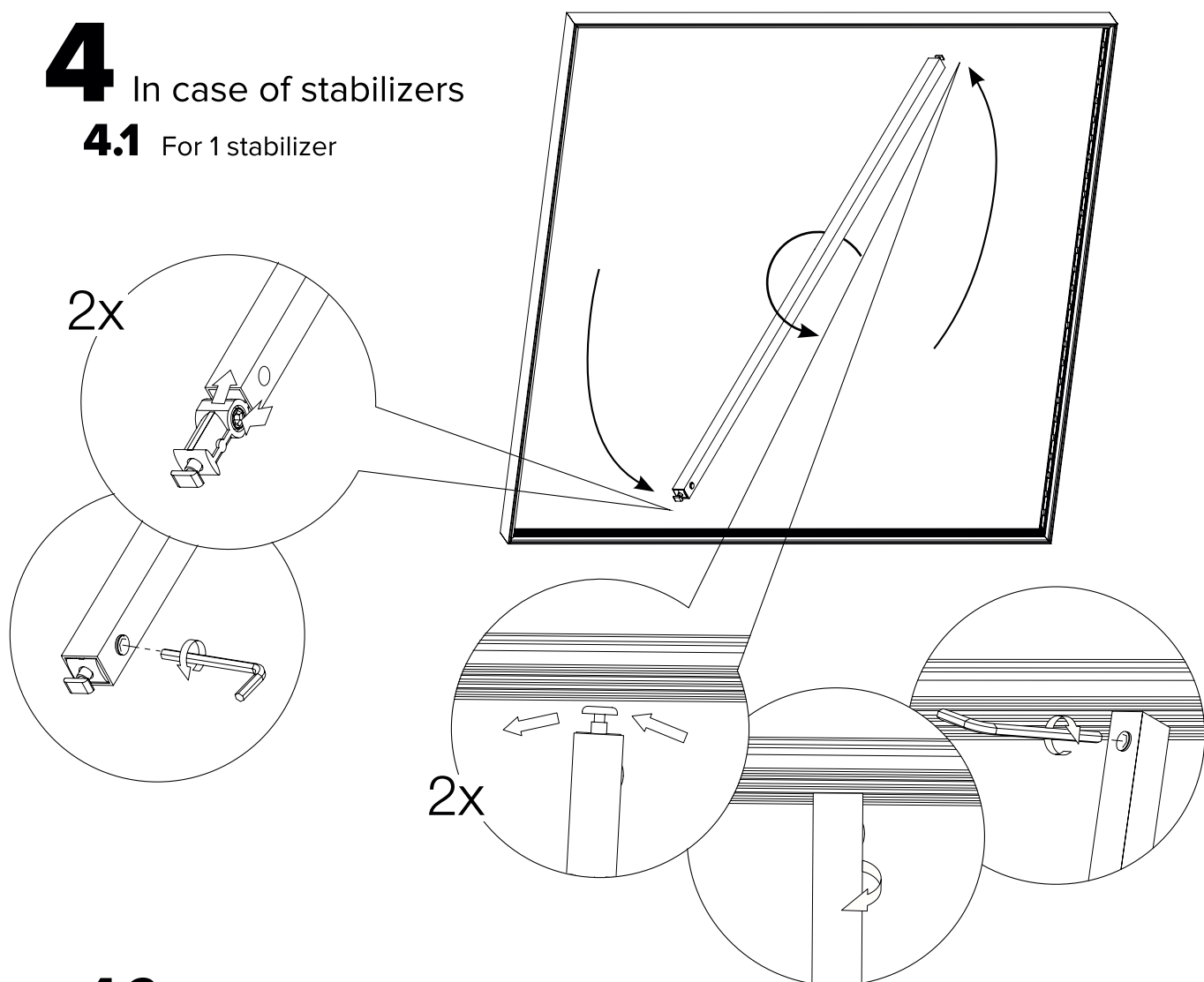
3

In case of extension plugs

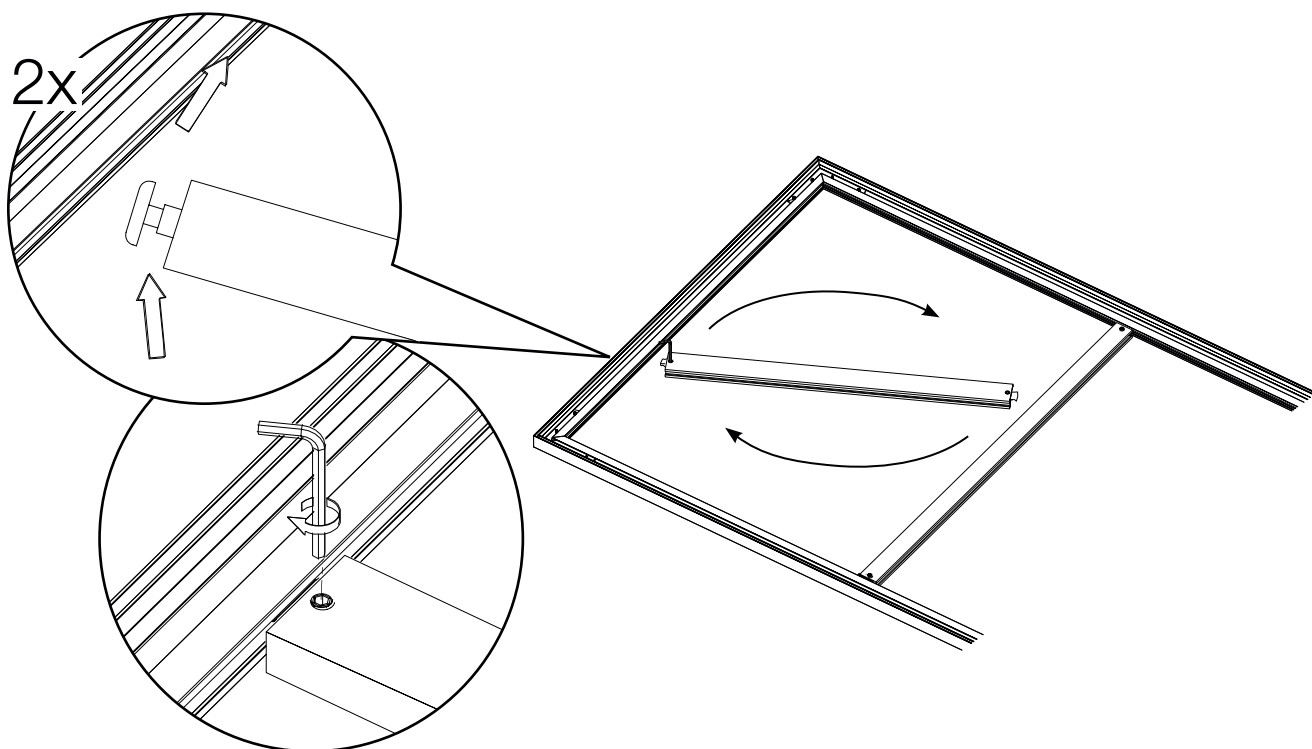


4 In case of stabilizers

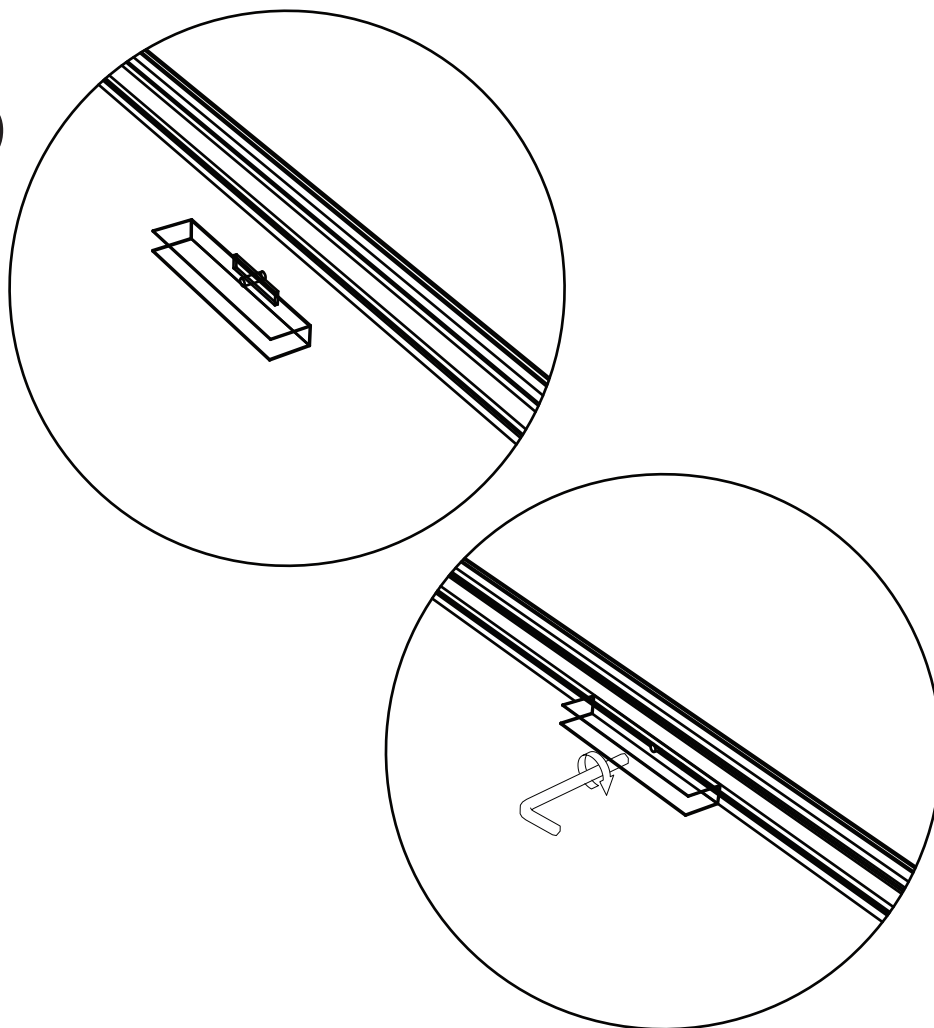
4.1 For 1 stabilizer



4.2 For 2 stabilizers

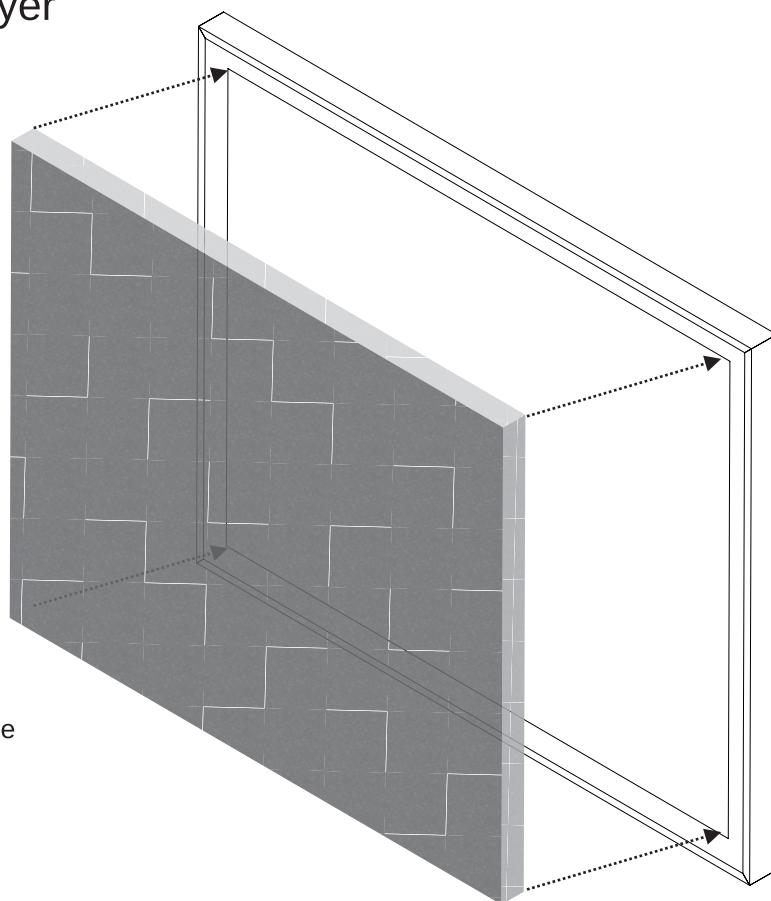


5



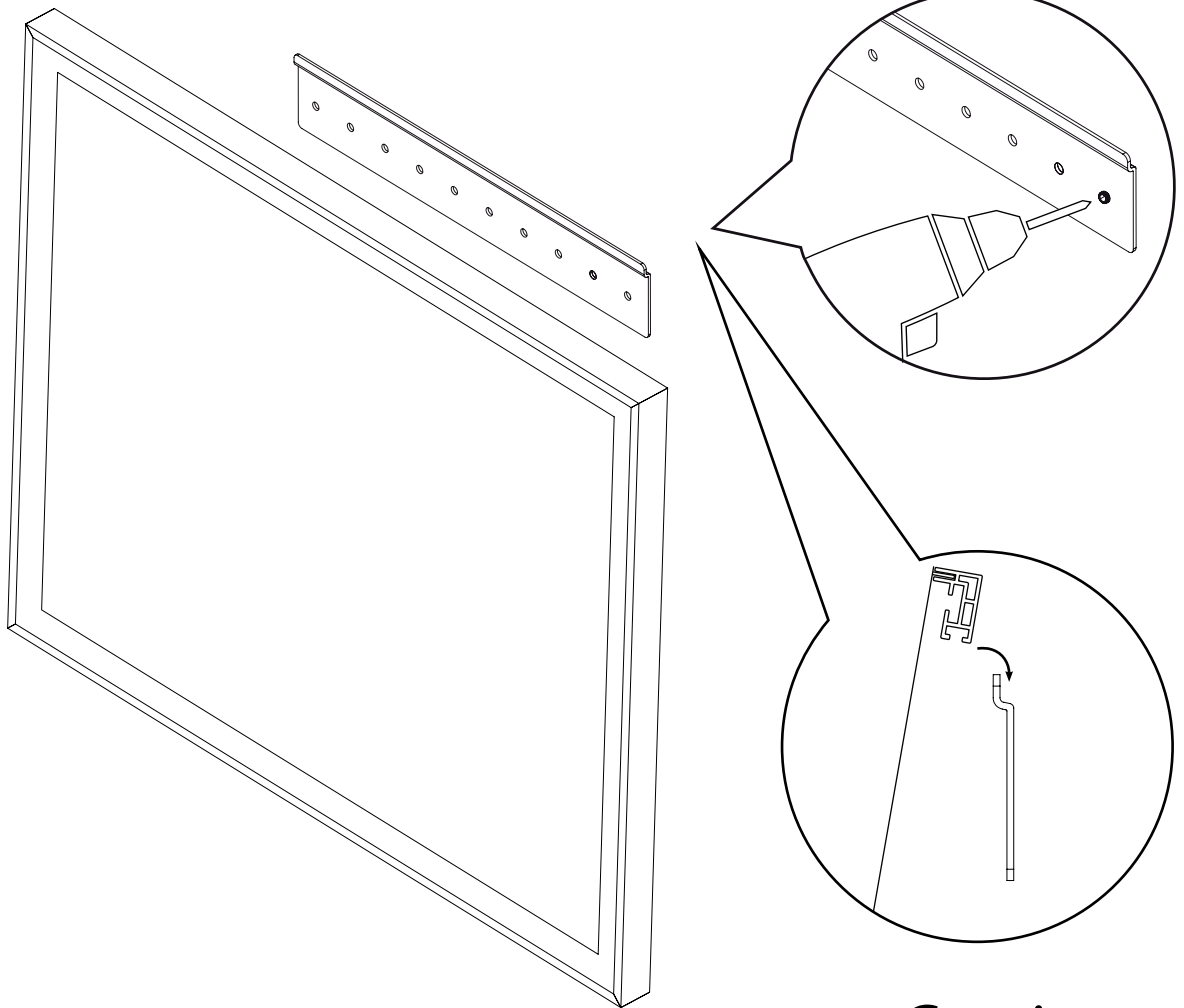
6

Sound-absorbing layer



Put sound-absorbing layer inside frame

7



8

Banner placement

Caution
These screws
are not provided !

